

WARRANTY INFORMATION

Meter-Treater, Inc. (M-Ti) warrants to its customers that the hardware products that M-Ti manufactures and sells will be free from defects in material and workmanship. Warranty coverage is for fifteen (15) years starting from the date of the original shipment from M-Ti. If any such product proves defective during the applicable warranty period, M-Ti, at its discretion, will repair without charge for parts and labor or will provide a replacement in exchange for the defective product.

This warranty shall not apply to any defect, failure, and/or damage caused by improper use, or inadequate maintenance or care. M-Ti shall not be obligated to furnish service under this warranty (a) to repair damage resulting from connection to incompatible equipment; or (b) to service a product that has been modified, altered or integrated with other products.

WARRANTY RETURNS

All warranty and non-warranty repairs must be returned freight prepaid and insured to **MTI**. All returns must have a Return Materials Authorization (RMA) number on the outside of the shipping container. This number may be obtained from **MTI** Customer Service at (800) 342-6890.

Products returned without an RMA number will not be accepted.

NOTE

IF UNIT(S) ARE RECEIVED DAMAGED, NOTIFY THE SHIPPING COMPANY IMMEDIATELY. RETAIN ALL SHIPPING CONTAINERS AND PACKING MATERIALS FOR INSPECTION.

Meter-Treater, Inc.
1349 South Killian Drive, Lake Park, Florida 33403
Phone: (561) 845-2007 Fax: (561) 848-2372
E-mail: sales@metertreater.com
Website: www.metertreater.com

RPM Series Surge Protective Device



**SURGE PROTECTIVE DEVICES
FOR
AC POWER APPLICATIONS**

COMMERCIAL INSTALLATIONS

USER MANUAL AND INSTALLATION GUIDE

P/N: 908-4001-000
MS 207-07/28/2010

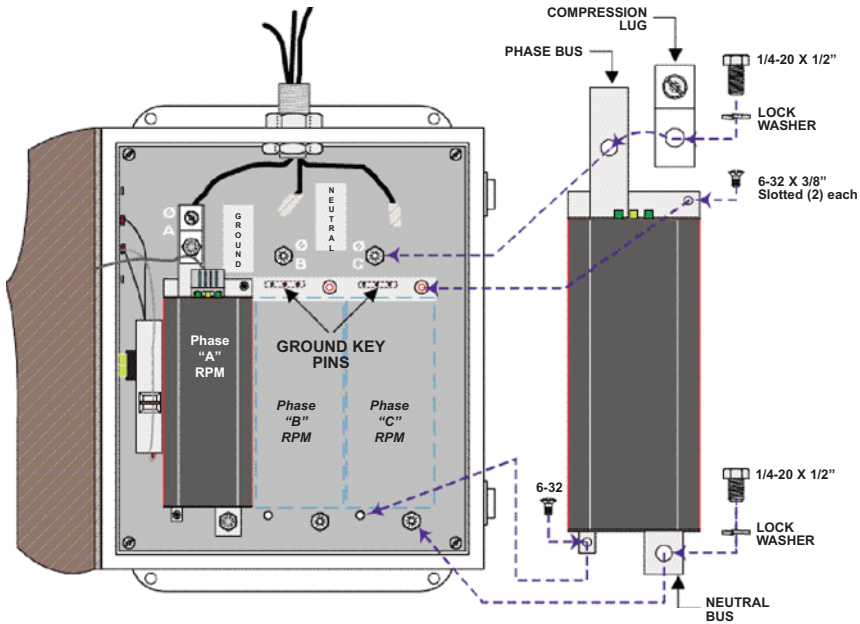


Figure #1: INSTALLATION LAYOUT

The design of the RPM Modules, and their connection method to the back plane PC board, make it physically impossible to install them against their proper polarity.

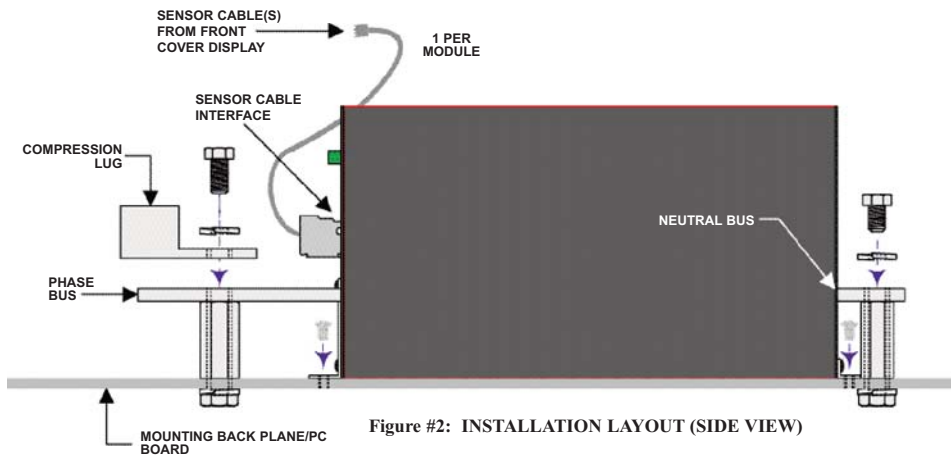
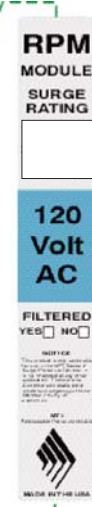
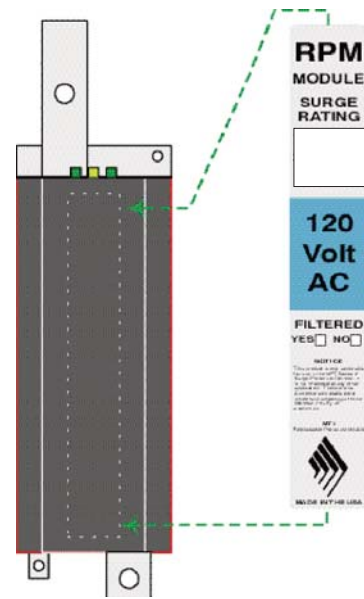


Figure #2: INSTALLATION LAYOUT (SIDE VIEW)



RPM Modules are color coded by voltage application. When replacing, make sure that you have the correct module for the application at hand. Using the wrong module is hazardous to your installation and could compromise personnel safety.

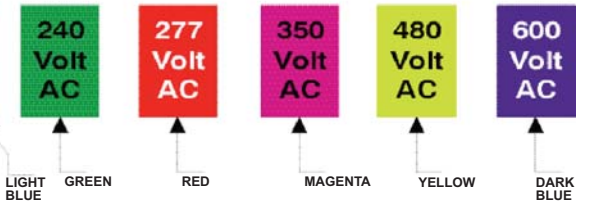


Figure #3: COLOR CODED APPLICATION LABELS

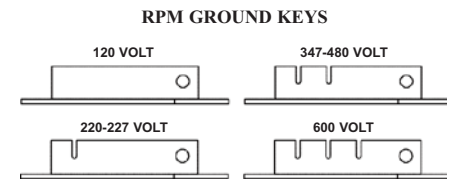


Figure #4: GROUND KEY APPLICATION MATRIX

Keyed grounding tabs help to prevent the misapplication of a module to incorrect voltages.

NOTE
DELTA CONFIGURED MODULES DO NOT INCLUDE THE AMBER LED FEATURE.

REMOVAL & REPLACEMENT OF THE RPM MODULES

1. Make Sure the power has been turned off to the MPT unit. Never work on the SPD unit while energized.
2. Disconnect the Sensor Cable from the RPM module. (Ø Side End Cap)
3. Remove the 1/4 20 bolts securing the RPM module to the phase and neutral tabs. One bolt at each end of the module. The compression lug comes off also.
4. Remove the 2 #6 Screws (1 at each end of the unit) securing the RPM to the Back Plane PC Board.
5. Remove the module from the MPT unit.
6. To mount the replacement module reverse steps 4, 3 and 2. Do not forget to reinstall the compression lug.
7. Close the MPT door and reconnect power.

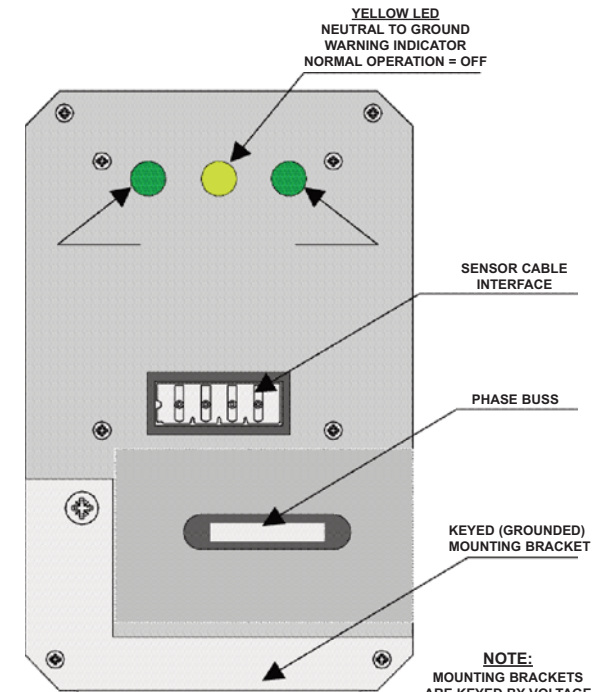


Figure #5: RPM Ø SIDE END CAP

NOTE:
MOUNTING BRACKETS ARE KEYED BY VOLTAGE APPLICATION.