

# Commercial/Industrial Surge Protective Device Module

## RPM SERIES

RPM Modules are Surge Protection Devices capable of providing heavy-duty surge protection and filtering for industrial and commercial sites against the harmful affects of transient energies induced on AC power lines.

The RPM's unique construction allows it to deliver low clamping voltages while safely handling large surge currents. It can be incorporated into an OEM or VAR protection design and provided the end enclosure is Listed it will maintain its Recognized status as a SPD device. One module per phase is required.

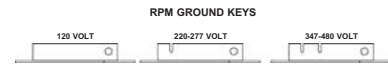
Configured for parallel installation, units cost nothing to maintain and are easy to upgrade while in service. All models have a 100kA rms symmetrical fault current rating. The surge suppression function of the RPM is provided by large diameter (40mm) MOV technology and thermal overload protection. Each module is capable of providing L-N, L-G and N-G protection modes.

On-board LED indicators continuously monitor the operational status of each protection mode (5 - 10 VDC Supply Required). Additional safety features include color-coded labels and keyed mounting by voltage application.



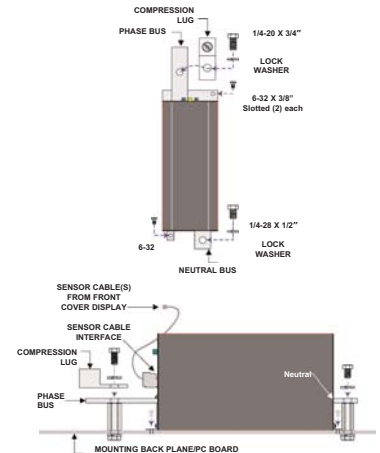
Product Specifications		Notes
Max Surge Current	300kA per phase	
Short Circuit Current*	100kA RMS Symmetrical Amps	
Fusing	Coordinated Surge and Thermal	
Operating Frequency	50/60 Hz	
Operating Altitude	-200 ft. to +15,000 ft.	
Diagnostics	LED, Remote Monitor Ready	
Safety Standards (Type 4 SPD)	UL 1449 3rd Ed. (Sept. 2009)	
$I_n^*$	10/20kA	

\*Required by UL 1449 3rd Edition



Keyed grounding tabs prevent the misapplication of a module to incorrect voltages.

### Installation



MODEL NUMBER	SERVICE VOLTAGE	MCOV	VPR		
			L-N	L-G	N-G
RPMXXX/120-W-#-1	120 Volt, Single Phase	150 Vac	500V	600V	500V
RPMXXX/240-D-#-1	240 Volt, Single Phase	320 Vac		1000V	1000V
RPMXXX/220-W-#-1	220 Volt, Single Phase	320 Vac	1000V	1000V	1000V
RPMXXX/230-W-#-1	230 Volt, Single Phase	320 Vac	1000V	1000V	1000V
RPMXXX/240-W-#-1	240 Volt, Single Phase	320 Vac	1000V	1000V	1000V
RPMXXX/277-W-#-1	277 Volt, Single Phase	320 Vac	1000V	1000V	1000V
RPMXXX/480-D-#-1	480 Volt, Single Phase	520 Vac		1500V	

**NOTES:** 1. Replace XXX with desired kA rating, per phase: 100 for 100kA, 200 for 200kA or 300 for 300kA.  
2. Replace # with F if filtering is required (WYE Models Only).



**Meter-Treater, Inc.**

1349 South Killian Drive, Lake Park, Florida, 33403

**Tel: Main** (561) 845-2007  
**Sales** (800) 638-3788  
**Fax:** (561) 848-2372  
**E-Mail:** sales@metertreater.com  
**Web:** www.metertreater.com