

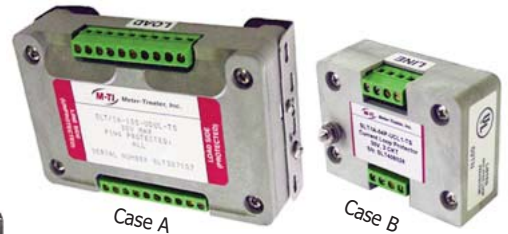
# Meter Modem Surge Protective Device

## UTILITY APPLICATIONS

## SLT SERIES

Transient Voltage Surge Suppression for standard low speed data (25MHz max), communication and signal line protocols. Unit provides protection against Transient Voltages that exceed the nominal operating voltage of incoming data. Each line is protected against surge current impulses up to 10kA, depending upon circuit configuration.

The **SLT Series** works in series with the communication lines being protected, diverting harmful transient energies while maintaining a tight clamp at the peak voltage.



Terminal Strip Screw Interface shown

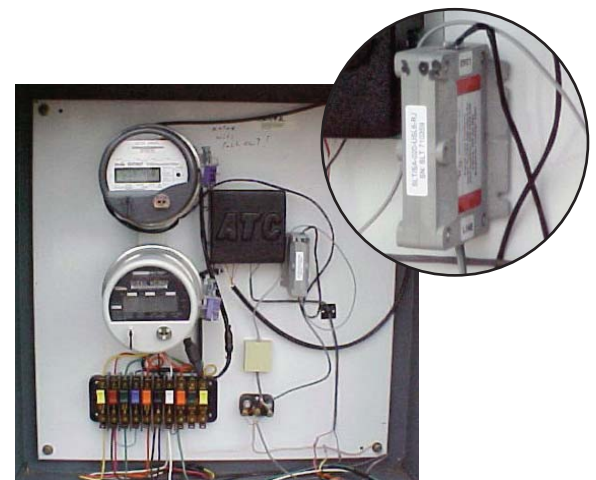
### Product Specifications

Max. Surge Current	10kA per wire
Max. Operating Voltage	1.5 - 270 V DC
Response Time	<5 nanoseconds
Series Resistance	5.3 Ohms (nominal)
Clamp Voltage	7.5V - 220V available
Enclosure	Plastic (UL Rated 94 5V)
Max. Operating Temp	-40 to +85 C
Warranty	10 Year Product Warranty

### Dimensions & Weights

**Case A:** 4.375" x 2.875" x 1.2" (.50 lb) 10 Wire MAX

**Case B:** 2.875" x 2.1" x 1.2" (.25 lb) 4 Wire MAX



**Protects most Modem-based Electric Meters including Form 2S, 4S, 6S, 8S, 9S, 12S, 16S, 20S**  
(Model SLT/SA-020-USL6-RJ shown above)

Model Number	Circuit & Case	Wires	Shield	Polarity	Protocol	Interface
SLT/	XZ	-XX	X	-X	XXX	-XX
Signal Line Treater	Replace X with C = 5kA (Commercial) I = 10kA (Industrial) S = Solid State & Replace Z with A = Large Case B = Small Case	Replace XX with 02 = 2 wires 04 = 4 wires 06 = 6 wires 08 = 8 wires 10 = 10 wires  Case A has a 10 wire MAX. Case B has a 4 wire MAX.	Replace X with 0 = No Shield S = Shield	Replace X with B = Bipolar Protection U = Unipolar Protection	Replace XXX with CL1 = 30V CL2 = 55V DC1 = 95V DC2 = 130V DC3 = 195V DC4 = 18V DC5 = 140V SL1 = 25V SL2 = 10V SL3 = 270V SL4 = 45V SL5 = 50V SL6 = 135V	Replace XX with TS = Terminal Strip Screw RJ = Mod Jacks  Consult factory for additional interface options.

**Protocol Explanation:** CL = Closed Loop DC = DC SL = Signal Line

**Meter-Treater, Inc.**



**Tel: Factory** (800) 638-3788

**E-Mail:** sales@metertreater.com

**Web:** www.metertreater.com

