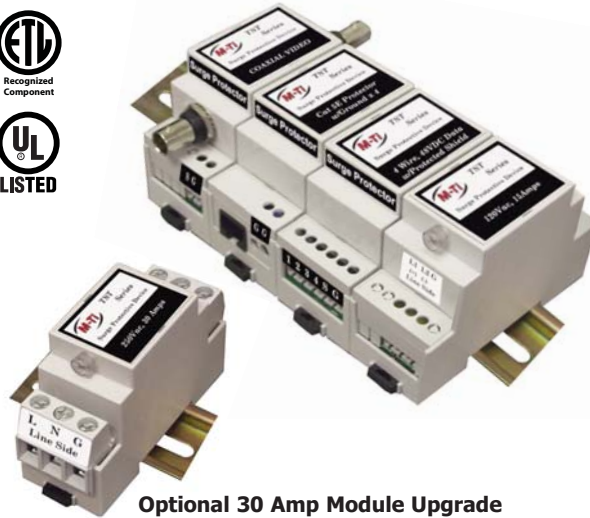


Integrated Security Protection System

ISPS Package



Optional 30 Amp Module Upgrade

- **Modules are easy to remove and replace, if necessary**
- **Din Rail mounting clips are reversible for wall mount installations**
- **Data Protection for CAT5e and Power over Ethernet**
- **Options for Indoor and Outdoor applications**
- **Video, Pan, Tilt and Zoom Protection**
- **Fifteen year warranty**

The ISPS Package represents a total surge protection approach for intelligent transportation systems (ITS), law enforcement and military agencies or any public or private operation concerned with uptime performance and reliability of their security monitoring and control systems.

Sophisticated electronic surveillance systems play an integral part in the management, control and coordination of everything from rush hour traffic to crowds at major public events. Your ability to act and react to emergency situations or disasters may depend on information provided by these systems in either real time or through recordings.

M-Ti's ISPS Package provides a high level of operational security to the cameras, computers, monitors, recorders and cables encompassing the modern surveillance system. By protecting these integrated components from environmental threats, caused by such things as lightning and/or manmade surge energies, the whole network will achieve greater reliability and longevity.

The Coaxial Line Module (CLT Series) is a Bidirectional Transient Voltage Surge Suppressor for Closed Circuit Video Surveillance Systems.

- Protects against Surge Current Impulses up to 20kA per wire
- Installs in series with the lines to be protected
- Series Resistance of < 0.1 Ohm
- Insertion loss of -2.3dB at 500 GHz
- Typical Response Time <1 picosecond
- Safety Standards: UL 497B



The Data Line Module (CAT5E Series) utilizes State-of-the-Art Avalanche Diode Technology to provide fast clamping and high energy handling capability.

- Protects CAT5e Data Lines with <1Gbps and <100Mhz
- Solid State fail-safe design
- Low Shunt Capacitance to Reduce Signal Loss
- RJ45 (female to female) Connection Method



The Signal Line Module (SLT Series) is a Transient Voltage Surge Suppressor for standard low speed data (25MHz max), communication and signal line protocols.

- Protect against surge current up to 10kA
- Installs in series with the lines to be protected
- Maintains tight clamp at the peak voltage
- Designed for Indoor Installations
- Maximum Operating Voltage: 1.5 - 270 V DC
- Safety Standards: UL 497B

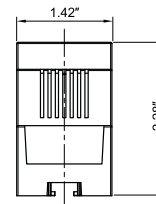
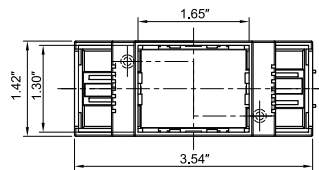
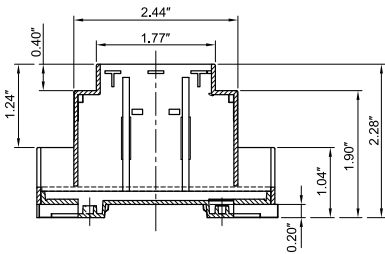


The AC Module (TST Series) is designed to protect sensitive electronic equipment from the harmful effects of transients and RFI/EMI interference.

- Configured for either Parallel or Series Installation
- Type 4 SPDs for Type 2 locations
- I_{n1} : 3 kA (nominal discharge current)
- 100kA RMS Symmetrical Amps
- Maximum Surge Current - 20kA per phase
- Safety Standards - ANSI/UL 1449 3rd Edition Recognized Component

Standard Module Selection (additional configurations available)

Model Number	Application	Connector	Service Voltage
Coaxial Modules			
CLT-CCV-2-ISPS	Closed Circuit Video	BNC	10 Volt
CLT-VCC-2-ISPS	Closed Circuit Video	BNC	75 Volt
Data Line Modules			
CTI-CAT5E-ISPS	Standard Category 5e	RJ45 F/F	7.5 Volt
CTI-CAT5E-POE-ISPS	Power over Ethernet	RJ45 F/F	56 Volt
Signal Line Modules			
SLT/ID-04S-U-CL1-TS-ISPS	Signal Line 4-20mA	Screw Terminal	30 Volt
SLT/ID-04S-U-CL2-TS-ISPS	Signal Line 4-20mA	Screw Terminal	55 Volt
SLT/ID-04S-U-DC1-TS-ISPS	Signal Line 4-20mA	Screw Terminal	95 Volt
SLT/ID-04S-U-DC2-TS-ISPS	Signal Line 4-20mA	Screw Terminal	130 Volt
SLT/ID-04S-U-DC3-TS-ISPS	Signal Line 4-20mA	Screw Terminal	195 Volt
SLT/ID-04S-U-DC4-TS-ISPS	Signal Line 4-20mA	Screw Terminal	18 Volt
SLT/ID-04S-U-DC5-TS-ISPS	Signal Line 4-20mA	Screw Terminal	140 Volt
SLT/ID-04S-U-SL1-TS-ISPS	Signal Line 4-20mA	Screw Terminal	25 Volt
SLT/ID-04S-U-SL2-TS-ISPS	Signal Line 4-20mA	Screw Terminal	10 Volt
SLT/ID-04S-U-SL3-TS-ISPS	Signal Line 4-20mA	Screw Terminal	270 Volt
SLT/ID-04S-U-SL4-TS-ISPS	Signal Line 4-20mA	Screw Terminal	45 Volt
SLT/ID-04S-U-SL5-TS-ISPS	Signal Line 4-20mA	Screw Terminal	50 Volt
Power Protection Modules			
TST020/120-10-F-1/15A-ISPS	Power Supply Protection	Screw Terminal	120 Volt
TST020/120-10-F-1/30A-ISPS	Power Supply Protection	Screw Terminal	120 Volt, 30 Amp
TST020/250-10-F-1/30A-ISPS	Power Supply Protection	Screw Terminal	250 volt, 30 Amp



Four (4) Modules have a total Din Rail footprint of 6.5"

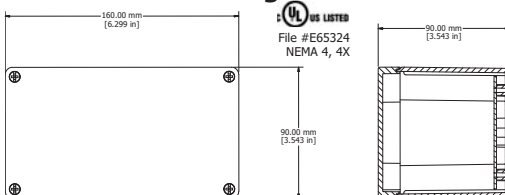
Din Rail Options

Standard 7 " Din Rail included. Optional 19" Double Rail System for over and under mounting of the ISPS Modules available. Double Rail System holds a maximum of 22 ISPS Modules.

Outdoor Power Supply Protection (50kA to 200kA)

Model Number	Application	Connector	Service Voltage
RCHW050/120-10-0-2	Outdoor, 50kA	Hardwire	120 Volt, 1Ø
RCHW100/120-10-0-2	Outdoor, 100kA	Hardwire	120 Volt, 1Ø
RCHW050/120-SP-0-2	Outdoor, 50kA	Hardwire	220-240 Volt, 1Ø
RCHW100/120-SP-0-2	Outdoor, 100kA	Hardwire	220-240 Volt, 1Ø
BPT050/120-10-0-2	Outdoor, 200kA	Parallel Install	120 Volt, 1Ø
BPT100/120-SP-0-2	Outdoor, 200kA	Parallel Install	220-240 Volt, 1Ø

RCHW Hardwire Surge Protection Device



Meter-Treater, Inc.

1349 South Killian Drive, Lake Park, Florida, 33403

Tel: Main (561) 845-2007
Sales (800) 638-3788
Fax: (561) 848-2372
E-Mail: sales@metertreater.com
Web: www.metertreater.com