



SLT HEB for: High Speed Gear Sensor Protector

High Energy Surge Protection Device for Sensors

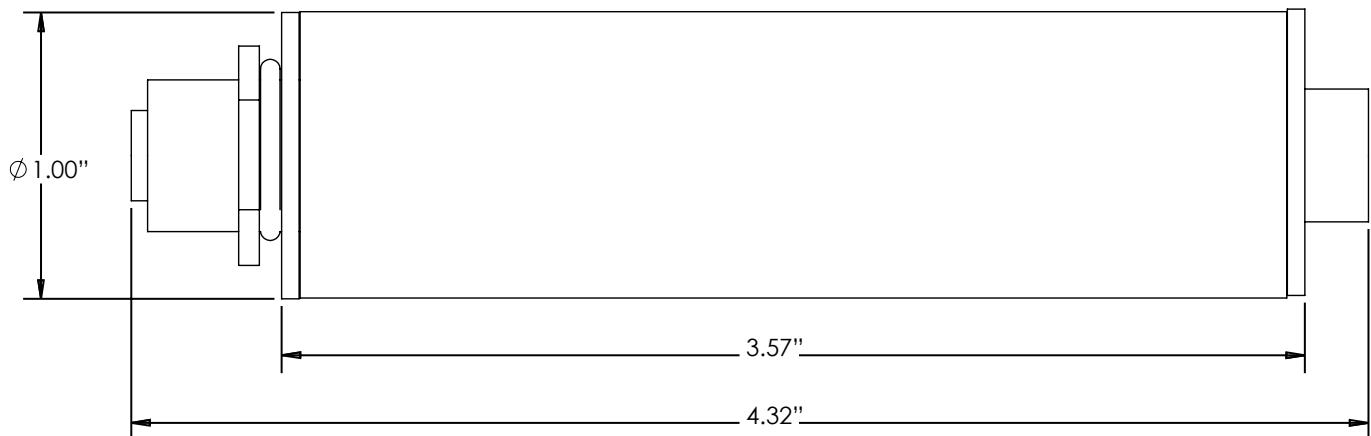


The SLT High Speed Gear Sensor Protector is 5 Wire SPD (surge protective device) unit that will interface directly, in series, with 5 pin M12/Euro/DC Micro Connectors. Unit is unidirectional due to connector configuration; where the male connector equals Line Side (unprotected) and the female equals the Load Side (protected). Circuit performance is bidirectional.

Unit is housed in a potted aluminum case with aluminum end caps. An external ground is provided through the mounting bracket.

Electrical Specifications	
Max. Surge Current	8kA
Max. Operating Voltage	36 Volts DC
Max. Operating Frequency	15 MHz
Max. Clamp Voltage	54.4 Volts @ 200 Amps/450 Volts
Surge Technology	High Energy Silicon Avalanche Diode Array (SAD)
Energy Rating/Wire	402.5 Joules
Response Time	< 1 Picosecond
UL Flammability Class	94 V-0
Connectors	5 Pin Rigid M12 Connectors Male & Femals (DC Micro - Euro)
Enclosure	Aluminum Extrusion or Aluminum End Caps
Max. Operating Temp.	-40° to + 125°C
Warranty	3 Year Product Warranty

Dimensions (Diagrams not drawn to scale)



All product dimensions provided are ± 0.125

Meter Treater: 1349 South Killian Drive • Lake Park, FL 33403

Email: sales@metertreater.com

Sales: 561.845.2007 Toll: Free: 800.638.3788 Fax: 561.848.2372

Website: www.metertreater.com